




## Dickens Heath, Shirley, Solihull

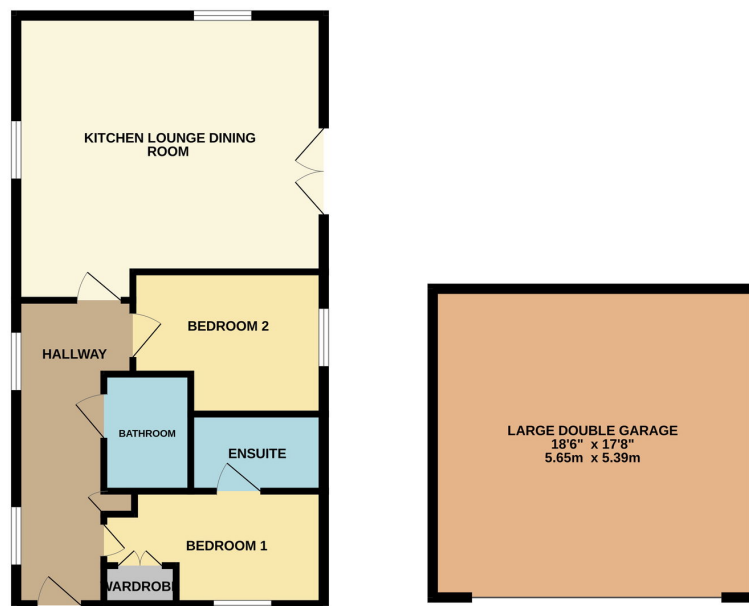
£225,000

 2  2  1



- Prime location in Dickens Heath, Shirley, Solihull
- Modern kitchen with integrated appliances
- Master bedroom with fitted wardrobe and en-suite
- Stylish family bathroom with bath and shower
- Off Road Parking
- Large double garage with up-and-over door directly underneath the apartment
- Juliet balcony off the living area
- Spacious, versatile second bedroom
- Spacious open-plan lounge/kitchen/diner
- Close to village amenities and excellent transport links

GROUND FLOOR



Whilst every attempt has been made to ensure the accuracy of the floorplan contained here, measurements of doors, windows, rooms and any other items are approximate and no responsibility is taken for any error, omission or mis-statement. This plan is for illustrative purposes only and should be used as such by any prospective purchaser. The services, systems and appliances shown have not been tested and no guarantee as to their operability or efficiency can be given.  
Made with Neopage ©2024

Welcome to your new home in the heart of the charming village of Dickens Heath, nestled in the highly sought-after area of Shirley, Solihull. This beautifully presented two-bedroom apartment offers the perfect blend of modern living and village charm, ideal for those looking to enjoy the serenity of a picturesque community while being within easy reach of all amenities.